

References

Gründer und Innovationszentrum Köln

With the InnoDom Cologne, a hub for innovation, exchange, and entrepreneurship has been created on the University of Cologne campus. The startup center combines modern workspaces with striking architecture and creates a space for collaboration between startups, academia, and the business community. Metal and glass elements define its appearance and make the building's creative spirit visible even from the city streets.

Facts

Area	Architecture
Location	Köln, DE
Year of manufacture	2021-2023
Architect	Kadawittfeld Architekten
Products	IGP-DURA®sky 95



Details

The two two-story “LIKE IT” spaces are an architectural highlight. They serve as social gathering spots and showcase life inside the building to the outside world.

Inside, too, the project prioritizes flexibility and user-friendliness. Open workspaces are complemented by quiet areas, meeting zones, and shared spaces. Several rooftop terraces extend the workspace outdoors and offer additional areas for relaxation, interaction, and creative breaks.

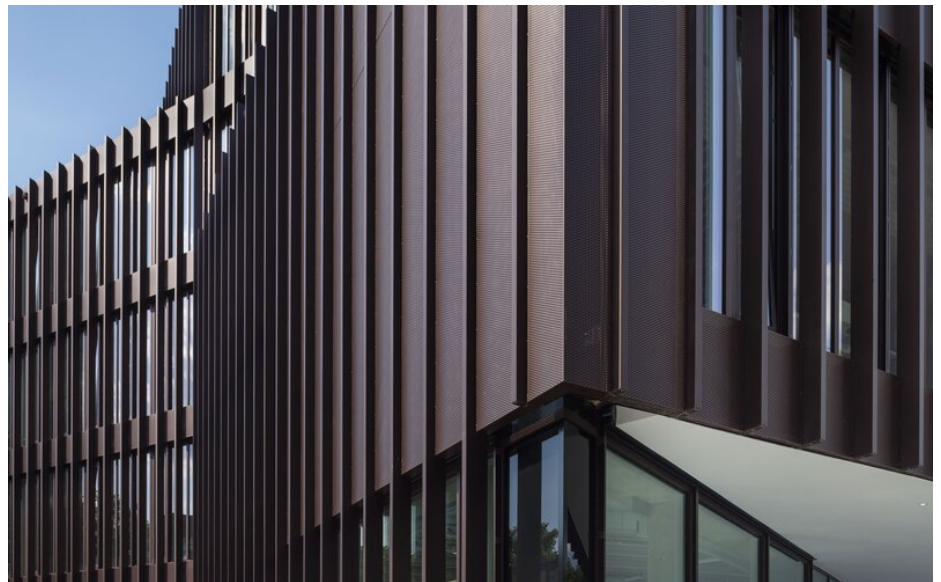
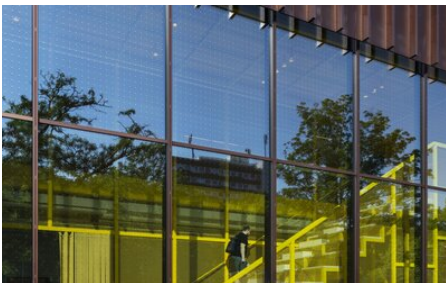
InnoDom Cologne was built for the Cologne University Foundation as an innovation and startup center.

The five-story new building was designed by the architectural firm Kadawittfeldarchitektur. With a gross floor area of 5,400 m², the building offers a flexible environment for creative work and collaborative exchange.

The building’s striking silhouette responds to the surrounding development while seamlessly integrating into the urban context. Generous glazing, precisely placed projections and recesses, and vertical aluminum pilasters give the facade a distinct identity. Together with the perforated metal elements, they create a dynamic facade design.

1.1 metric tons of IGP-HWFclassic 591TE-R3 were used to coat the metal components. The powder coating system enhances the high-quality appearance of the facade and underscores the building’s modern, industrial character. The coated aluminum components blend harmoniously into the overall architectural concept and contribute to the striking appearance of the InnoDom Cologne.

The architectural images were provided by photographer Jens Kirchner



You can find more interesting references on our website.

<https://igp-powder.com/en/reference/60171/grunder-und-innovationszentrum-koln>

If you have any questions, please contact us at any time, we will be happy to advise you.

