

## References

# Cité Léopard Carouge

Cité Léopard in Carouge (Geneva) is a well-thought-out new construction project that combines urban living, commercial space, and green areas in a modern, ecologically oriented neighborhood. With its blend of architectural clarity, carefully selected materials, precisely coordinated color and surface concepts, and collaborative partnership between all parties involved, Cité Léopard is a successful example of contemporary urban development – lively, robust, and consistent in design.

### Facts

Area	Architecture
Location	Geneva, CH
Year of manufacture	2025
Architect	LOCALARCHITECTURE
Products	IGP-HWFclassic 59



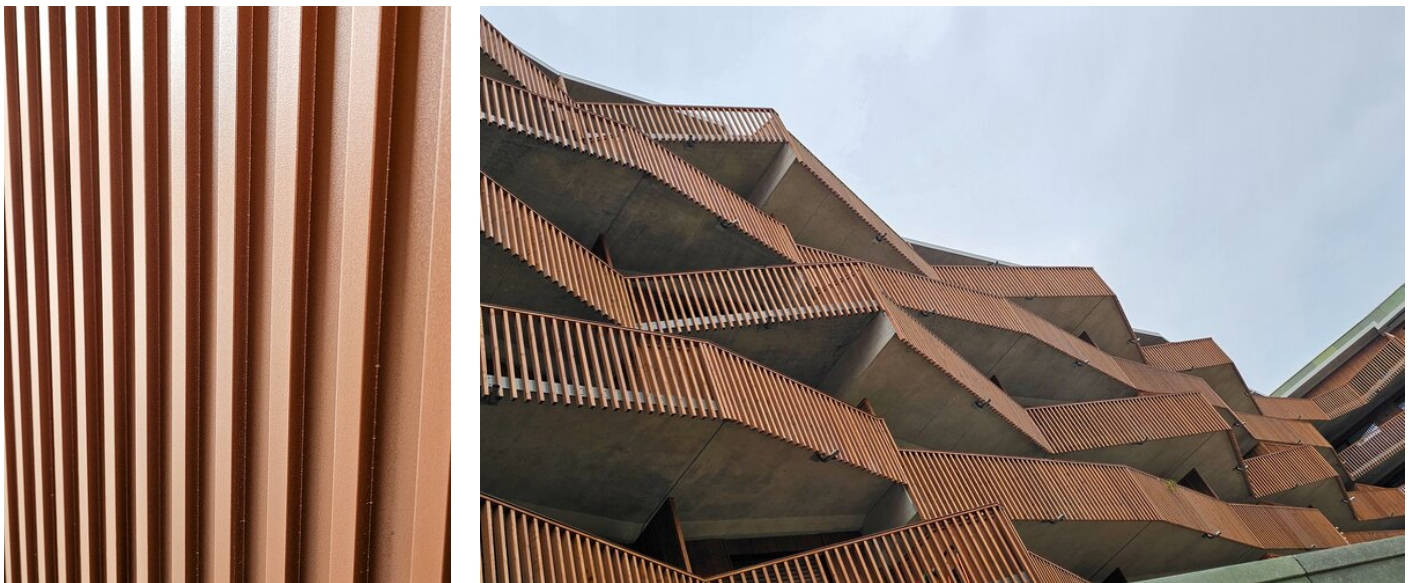
## Details

Cité Léopard in Carouge (Geneva) is a modern, eco-friendly neighborhood that combines high-quality residential space and versatile commercial space in a **closed block system**. The complex comprises around 284 apartments of various sizes and approximately 3,000 m<sup>2</sup> of flexible commercial space on the ground floor. The spacious, green inner courtyard forms the heart of the complex and creates a high quality of life for residents as well as a clear connection between living, public space, and local infrastructure.

From the outset, the architects at LOCALARCHITECTURE **pursued a precise design vision**. The choice of materials was largely defined, in particular the sophisticated color combination of coated building elements and colored concrete elements. After an intensive selection process between red, orange, brown, and green tones, the latter were ultimately executed in shades of red, orange, and brown—clearly visible on the completed facade surfaces. To ensure a harmonious match, the selected **IGP color** had to be precisely **matched to these concrete colors** while also guaranteeing a robust, durable surface.

Prior to implementation, CONSTRUCTION PERRET SA, together with Dold (internally supervised by Thomas Tauber), conducted **extensive tests** for possible repairs using wet paint. Only after these tests proved successful was the definitive IGP color IGP-HWF® classic 591TE81003R30 Cuprum Spin approved for coating. Careful coordination between material, color, and surface was a crucial part of the design intention and high-quality implementation.

The project impressively demonstrates how close, solution-oriented cooperation between all parties involved leads to a convincing architectural and technical result.



You can find more interesting references on our website.  
<https://igp-powder.com/en/reference/58349/cite-leopard-carouge>

If you have any questions, please contact us at any time, we will be happy to advise you.

