

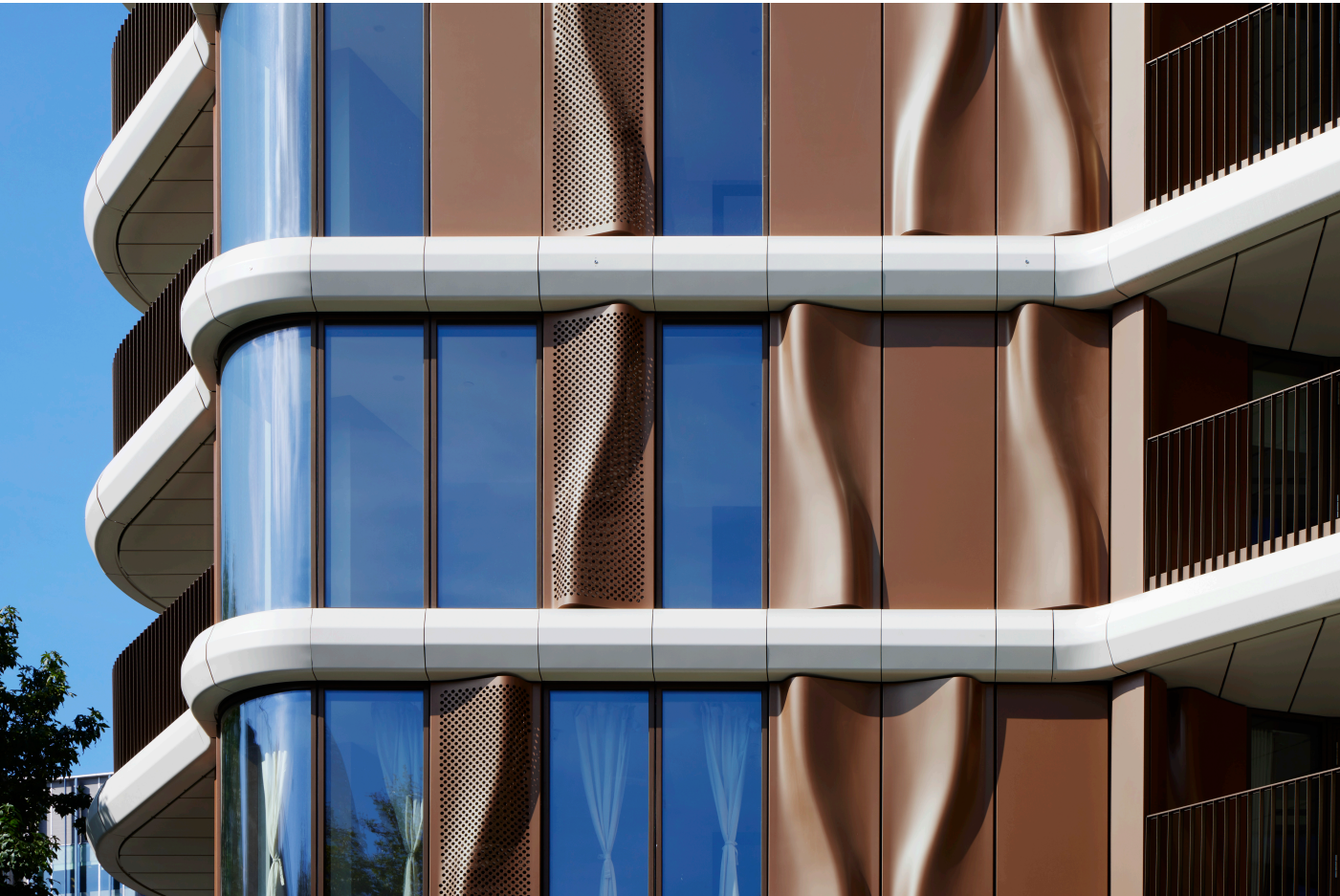
References

**Triptych Bankside**

The Triptych Bankside is a luxury architectural project in the heart of London's Southbank, a center for culture, art and design. The building comprises 169 luxury apartments, around 7,900 square meters of office and commercial space as well as areas for retail, wellness and cultural use. With its architecture and unique location, Triptych Bankside is one of the most popular destinations in London.

**Facts**

Area	Architecture
Location	London, UK
Year of manufacture	2023
Architect	Squire & Partners London
Products	IGP-HWFclassic 59



## Details

### A new masterpiece of modern architecture

Inspired by the movement of the nearby River Thames, the undulating curves and bold architectural proportions of Triptych Bankside make a confident statement on the London skyline. The project was designed by architects Squire & Partners and combines sculptural aesthetics with functional elegance.

Rounded building corners, stepped floor slabs and expressive balconies lend the towers a sense of lightness and harmonious integration into the surrounding waterfront landscape. The façades are characterized by timeless materials such as bronze, stone, powder coating and glass.

The following objects were coated with IGP powder coating by KFK Croatia:

- IGP-HWFclassic 5903E83651S70 for the façade elements
- IGP-HWFclassic 5903E81872S3F for profiles and doors
- IGP-HWFclassic 591TC13678A11 for the white surfaces

### Triptych Bankside - a place where creativity inspires life!

The architectural images were provided by photographer Jack Hobhouse, Hobhouse Photography Ltd.



You can find more interesting references on our website.  
<https://igp-powder.com/en/reference/54645/triptych-bankside>

If you have any questions, please contact us at any time, we will be happy to advise you.

