

References

# Win Win

Built along Speditionsstrasse directly on the waterfront, the Win Win towers consist of a six-story loft building and two 19-story high-rises, which border a square with a wide flight of steps leading down to the harbor basin.

## Facts

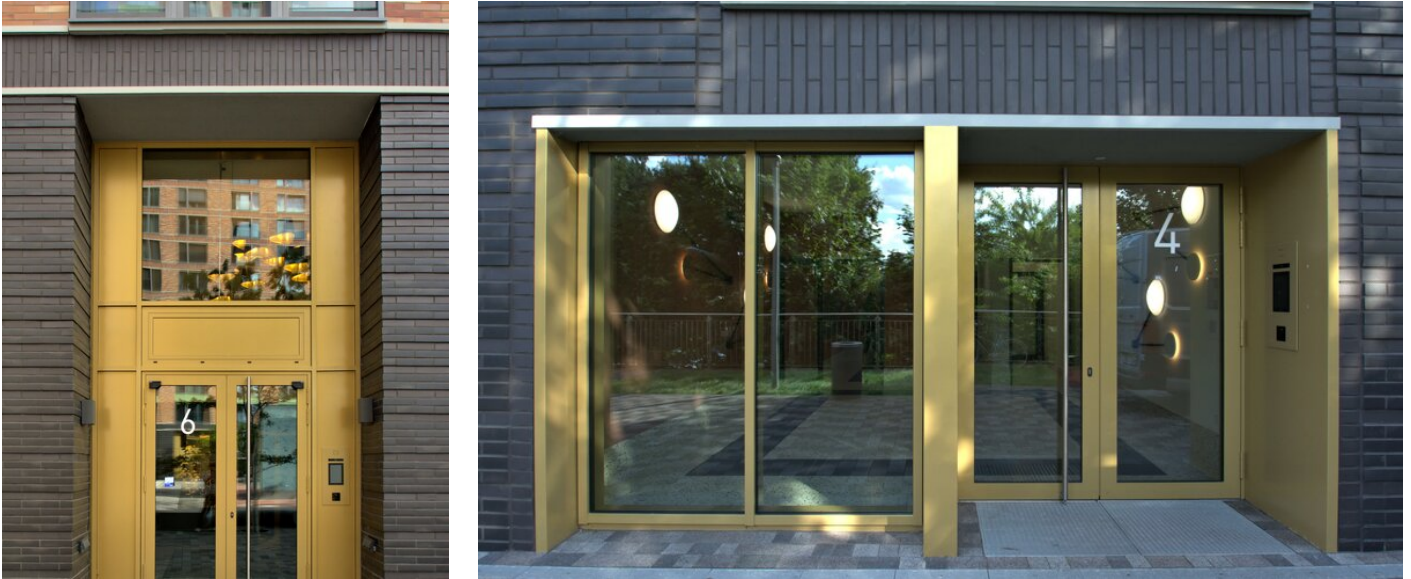
Area	Architecture
Location	Düsseldorf, DE
Year of manufacture	2020
Architect	KSG Architekten



## Details

The façades are architecturally divided; the floors rest on an anthracite-colored base, designed with warm-colored brickwork in three distinct shades. Each tower is crowned by two floors with a green-patinated metal façade that encloses rooftop gardens. These structures make a striking impression in the neighborhood, projecting a tranquil and authoritative aura and evoking the iconic structures of Brooklyn.

The architectural images were provided by photographer Jürgen Mecke.



You can find more interesting references on our website.

<https://igp-powder.com/en/reference/49834/win-win>

If you have any questions, please contact us at any time, we will be happy to advise you.

