



POWDER  
COATINGS

# IGP-HWF*superior* 57 Lasting Experience Collection

---

Super durable, premium-grade façade coatings:  
scratch-resistant powder coatings combined with  
highly weather-resistant brilliance.

The background of the lower half of the page is a dense, close-up photograph of various tropical plants. The most prominent are large, dark green monstera leaves with characteristic holes (fenestrations). Other plants with long, narrow, pointed leaves are visible in the background, creating a lush, layered texture. The lighting is soft, highlighting the natural sheen and veins of the leaves.

For maximum  
color and gloss  
stability.

swiss  quality

**Unrivaled in its class.**

**Super durable PLUS**

IGP-HWF *superior* 57 withstands a five-year testing period under intense UV exposure in the hot, humid Florida climate, achieving proven top-level color and gloss stability.

It meets the extremely demanding requirements of quality standards such as GSB Florida 5, Qualicoat Class 2, and AAMA 2604.



### Your benefits at a glance

- + Process safety through compliance with global quality standards
- + Value preservation thanks to significantly enhanced color and film integrity
- + Long-term product warranties
- + Easy-to-clean surfaces thanks to the IGP-DURA<sup>®</sup>clean effect
- + Environmentally friendly thanks to PFAS-free binders
- + Economical with 1-layer application
- + High coverage even on inhomogeneous substrates

# IGP-HWF*superior* 57



57

## 5703 — Smooth finish, matte



5703E79166S30  
Pearly Haze 2



5703E93166S30  
Silver Surfer



5703E14015S3F  
Sparkling Champagne



5703E78873S30  
Bell Bronze



5703E83173S3F  
Brown Sugar



5703E84605S30  
Roman Umber



5703E64618S3F  
Jungle Thicket



5703A84550S10  
Chocolate Bean





## 5707 — Smooth finish, silk gloss



5707E71755S30  
Cast Aluminium



5707E83263S30  
Silver Brown



5707E77963S30  
Polished Granite



5707E85560S30  
Grey Hammertone



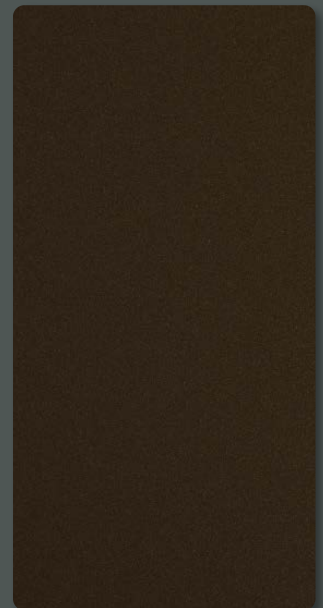
5707E14712S30  
Algarve Beach



5707E13688S30  
Golden Brass



5707U83125S10  
Charon



5707U84576S10  
Mangan Blend





571T — Fine texture, deep matte



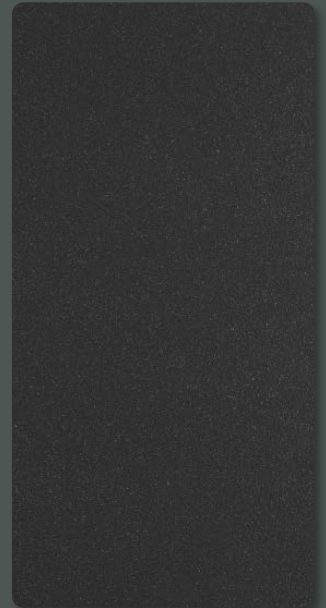
571TU14268R10  
Limestone Rock



571TE7A515R30  
Lithium Grey



571TE79389R30  
Urban Grey



571TA79193R10  
Night Hawk



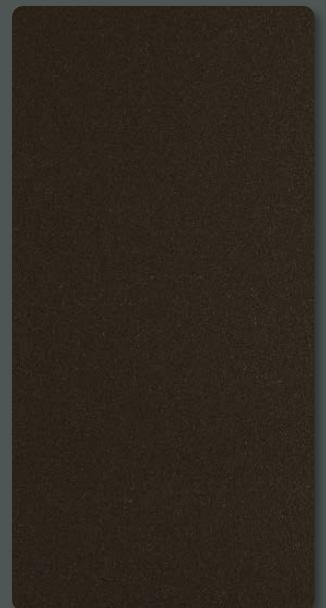
571TE14264R30  
Desert Ore



571TE75692R30  
Ground Quartz



571TE83614R30  
Egyptian Jaspis



571TU85576R10  
Textured Bronze



# Value preservation and efficiency.

## IGP-Effectives® technology – process safety and material efficiency

Effect shades produced with the patented IGP-Effectives® technology are characterized by a uniform and consistent effect distribution. This enhances color consistency, even if different application parameters are used or several coating companies work on the same project.

IGP-Effectives® technology ensures high recovery rates of overspray during closed-loop application. Even after multiple cycles, up to 97% of the fresh powder can be recovered, resulting in high material efficiency.

## Robust surfaces

Enhanced scratch resistance provides significant added value for both manufacturers and users. It effectively protects the coated surfaces against chipping and abrasive stress, improving durability during assembly work and maintenance cleaning.

## Green building credits

IGP-HWF<sup>superior</sup> powder coatings are based on PFAS-free binder systems and are ideal for Green Building projects. Energy-efficient curing of the varnish at temperatures from 170 °C, as well as the absence of solvents (VOC) and the use of formaldehyde-free formulas, make these powder coatings an environmentally friendly option for sustainable building designs.

## The best of both worlds

The IGP-HWF<sup>superior</sup> 57 coating series is certified in accordance with the quality standards for aluminum defined by the GSB and Qualicoat certification bodies. It also meets the requirements of Qualisteelcoat for coating steel and galvanized steel. Furthermore, this product series has been tested and independently validated in accordance with the American Architectural Manufacturers Association (AAMA) guidelines for super durable façade coatings (AAMA 2604).

**70% higher gloss and color stability than conventional super durable façade coatings.**

## IGP-HWF<sup>superior</sup> 57 product range

Product group	Surface aspects		Approvals / test reports
5703A-S1 5703E-S3 5703U-S1	Uni colors Effect shades IGP-Effectives® technology	Smooth finish, matte	<b>On aluminum:</b> Qualicoat (Class 2), GSB (Florida 5), and AAMA (2604)  <b>On steel and galvanized steel:</b> Qualisteelcoat ST2/HD2, tested on IGP-KORROPRIMER 60  <b>Fire behavior:</b> Test report in accordance with DIN EN 13501-1
5707A-S1 5707E-S3 5707U-S1	Uni colors Effect shades IGP-Effectives® technology	Smooth finish, silk gloss	
571TA-R1 571TE-R3 571TU-R1	Uni colors Effect shades IGP-Effectives® technology	Fine texture, deep matte	

Manufacturer's declaration: The shades are marketing samples and may differ from the actual color and gloss level of coated workpieces sharing the same article number.



**The exceptionally  
sustainable and  
resource-efficient  
powder coating.**

The information and illustrations in this brochure are valid at the time of printing. IGP Powder Coatings reserves the right to make any necessary changes at any time and without prior notice. IGP innovations are protected by patents.

**IGP Pulvertechnik AG**  
Ringstrasse 30  
CH-9500 Wil  
Phone +41 71 929 81 11  
info@igp-powder.com  
igp-powder.com

A Dold Group company

2501\_57



[igp-powder.com/en/hwfsuperior57](https://igp-powder.com/en/hwfsuperior57)

There is an answer  
to every surface.  
**IGP FOR SURE.**

