



# Agricultural and construction equipment: for heavy duty workers


---

Permanent protection for machinery subject to extreme stresses. Optimize your production processes and reduce your energy consumption.

Effective protection,  
optimized processes,  
a sustainable future.

swiss  quality





## Efficient coating for heavyweights: Powder coatings for cost-effective solutions.

IGP low-temperature powder coatings offer reliable corrosion protection in the kind of challenging environments faced by construction machines and agricultural vehicles. The coatings have undergone extensive endurance tests to ensure lasting protection. IGP focuses on environmentally friendly technologies and first-class customer service in order to meet customers' individual requirements and offer long-term protective solutions.

### Your benefits at a glance

- + High process speed
- + Robust systems with a wide application window
- + Large variety of colors
- + High corrosion protection
- + Maximum efficiency
- + Optimized production capacity
- + Reduced production costs
- + Bespoke service



# Safety, efficiency, and sustainability in one product.

Consistent use of highly reactive powder coatings enables a higher process speed and/or an immediate reduction in the curing temperature.

### Lower energy costs thanks to shorter throughput times

Energy costs are skyrocketing and concern for the environment is growing - the requirement for efficient coatings of construction machinery and agricultural vehicles is more important than ever. The highly reactive powder coatings from IGP not only allow efficient coating of large heavy-duty vehicles, but also offer significantly lower energy costs and faster throughput times. With convenient curing windows from 150 °C, they guarantee optimum coating results and enable efficiency gains in the coating process. Thanks to the increased process speed and optimized oven throughput times, more parts can be coated in less time, which not only requires fewer human resources but also helps to reduce the carbon footprint.

### Sustainable and safe coating

IGP powder coatings not only offer efficient coating solutions, but are also sustainable and safe. Unlike liquid coatings, they contain no harmful solvents and release no harmful vapors, minimizing their environmental impact and protecting the health of employees. The use of powder coatings therefore contributes to sustainable and safe production processes.



IGP powder coatings enable optimum coating results from temperatures as low as 150 °C.



### Lower curing temperatures

#### Reduce oven temperature

- Save energy costs
- Reduce your carbon footprint

#### Cure heavy parts rapidly

- Use oven times cost-effectively
- Ensure cross-linking



### Increase your processing speed

#### Utilize oven times better

- Boost productivity
- Generate economic advantages

#### Reduce oven time

- Save time and personnel costs
- Achieve higher profits

# Durability through customized solutions.



High-quality coating solutions guarantee durability, functionality, and tailored protection.

### Corrosion protection

Construction and agricultural vehicles, machinery, and equipment are exposed to harsh environmental conditions. On construction sites, roads, and fields, they are subjected to chemicals, salt, and aggressive construction materials, which can damage their surfaces and promote rust formation. Our high-quality coating solutions permanently protect machines, vehicles, and their component parts against corrosion. Our single-coat and two-coat systems have demonstrated their excellent corrosion protection properties in endurance tests, including salt spray tests. Therefore, they can play a significant role in preserving the value of your machines and equipment.

### Weather resistance

Machines, equipment, and vehicles for the construction and agricultural sectors are designed for heavy work. From the steel structures of cranes and other heavy machine components to tractors, plows, concrete mixers, and more – all are exposed to harsh climatic conditions and high mechanical stresses. The super durable powder coatings from IGP are the right choice for these environments. In weathering tests, they have proven their excellent weather resistance and extreme robustness.

## Low-temperature powder coatings

		Weather resistance	
		Industry, exterior	Super durable
Corrosion protection	High-End	18 + 66	18 + 79
	Standard	66	79

Find more information about the specialized systems on the right.



### Resistance to chemicals

The harsh conditions that machines, tools, and vehicles face in agriculture and construction often create daunting challenges for their designers. IGP's cost-effective and environment-conscious powder coatings sustainably increase the durability of your construction and agricultural machinery. Their resistance to chemicals means they are impervious to cleaning agents, operating materials, and chemical reactions, e. g. caused by fertilizers, construction materials, and salts. Thanks to their excellent resistance, the powder coatings retain their gloss, color, and haptic quality over the long term.

┌  
**The driving force  
behind our solutions?  
Technical innovations.** └

18

IGP-KORROPRIMER

Low-temperature primer (curing conditions from 140 °C) for use on thick-walled substrates. Reduces energy costs and optimizes processing times.

66

IGP-DURA<sup>one</sup>

Low-temperature powder coatings with curing temperatures from 150 °C for a multitude of applications.

79

IGP-HWF *industry*

Super-durable, low-temperature powder coatings, curable at 150 °C or higher, for heavy steel parts and constructions.



# Versatile and customized.



A wide variety of solutions tailored to your machines and equipment.

IGP powder coatings meet typical industry specifications and technical requirements. They are not only suitable for especially thick or thin steel parts, but also for heavy steel components. They are available in a variety of shades specially tailored to the requirements of heavy-duty machinery. You can request sample panels at any time. Our central warehouse means we can deliver paints quickly and efficiently. And if the shade you require is not available, you have the option of requesting a customized color formulation.

Our laboratory offers additional flexibility and lets us cover specific requirements. This is how we ensure that the coating perfectly matches your machines and that your corporate design is optimally implemented. You can even order small quantities to meet your specific requirements.



## Your benefits at a glance

- Wide variety of shades
- Central warehouse guarantees fast availability
- Customized color formulations possible
- Small quantities available to order
- Customized solutions
- High consistency of individual deliveries





**Durable finishing  
in the colors of your  
corporate design.**



A low-angle, vertical shot of a large yellow tower crane against a cloudy sky. The crane's lattice structure is prominent, with a horizontal jib extending to the left. A white operator's cab is visible on the jib. The crane is supported by a tall, yellow tower. The sky is a mix of grey and blue tones.

Perfection through  
coating tests and  
technical consulting.

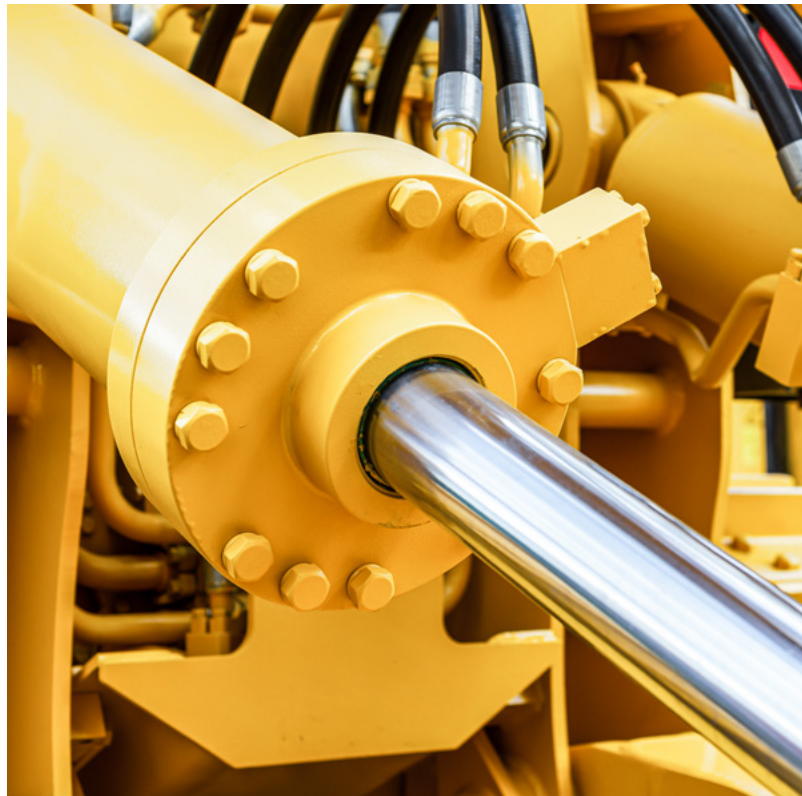


# A partnership for flawless production.

Discover our services for the agricultural and construction machinery industry. They are designed to achieve the highest quality standards and minimize the risk of complaints or delivery delays.

These services allow comprehensive OEM management that supports both manufacturers and job coaters. The IGP training and support program helps to ensure the right product is used correctly and that the required quality standards are always guaranteed. IGP also offers a wide range of coating tests using state-of-the-art equipment to ensure that the products meet all specifications and technical requirements.

Benefit from the decades of experience behind IGP Powder Coatings – to ensure you get excellent results from your powder coating. IGP consultants are qualified experts in powder coating and can support you with valuable recommendations for your coating process. Choose the components from the service package that suit your needs. If you have any specific questions, our experts will be happy to visit your company and provide you with specialist advice on site.



## Perfect your coating process

- Proven experts in coating processes
- OEM management to support manufacturers and job coaters
- Coating tests with state-of-the-art equipment
- Customized service package
- Technical consulting on site

# Tailored customer support. Fast and uncomplicated.



Together, we'll make your projects a success – this is IGP's motto. Our consultants are experts in powder coatings and the coating process, providing support, know-how, and helpful recommendations in all aspects of powder coating.

#### **Quality assurance through specific tests**

Our specific tests offer comprehensive quality assurance for your products. Corrosion tests and weathering tests ensure that the products are resistant and can withstand environmental influences. Mechanical and chemical tests confirm that your products can withstand demanding operating conditions and various chemical influences without exhibiting any negative effects.

#### **Technical support**

Our support service offers fast response times and a wide range of support options to ensure your products meet the required specifications. Our experts are available to assist you with color matching and training for job coaters.

#### **Increase efficiency with Analyze-It**

This service offers a comprehensive analysis of the energy efficiency of your products. The Analyze-It tool identifies potential savings and allows us to develop customized solutions. Our experts provide support and help to optimize products for improved efficiency. Customers receive a detailed overview of their energy consumption, enabling them to make sustainable improvements.

Quality, support,  
and efficiency –  
our passion  
for your product.



# Enhanced performance through further training.

Well-trained employees are a strategic success factor for every company. For this reason, IGP offers education and training for our customers. IGP certification programs are available in the area of process reliability.

### Customized IGP training courses

Our comprehensive training program is designed to ensure competent, efficient use of high-quality powder coatings.

The subject matter ranges from the basics to specific specialist content and is therefore suitable for professionals at all experience levels. These intensive training courses lay a crucial foundation in terms of process reliability, correct handling of the various IGP products, and meeting our customers' challenging quality requirements.



### Overview of IGP certifications

The IGP certification program for coating companies is designed to maximize process reliability while ensuring that all professionals who process powder coatings share a uniform understanding of the respective processes. These certifications guarantee high quality and offer IGP-certified companies attractive benefits.



### Your service overview

#### Training

- IGP OnTour, right on your doorstep
- Customized training courses

#### Coating tests

- Corrosion
- Weathering
- Mechanics
- Resistance to chemicals
- In accordance with customer specifications

#### Certificates

- Level 1: IGP Basic
- Level 2: IGP-DURA®one, IGP-KORROPRIMER and Low Cure

#### Technical support

- Color formulation
- Specification consulting
- Support for job coaters

#### Analyze-It

- Analysis of energy savings

# Surface finishing for a bright future.

The information and illustrations in this brochure are valid at the time of printing. IGP reserves the right to make any necessary changes at any time and without prior notice. IGP innovations are protected by patents.

**IGP Pulvertechnik AG**  
Ringstrasse 30  
CH-9500 Wil  
Phone +41 71 929 81 11  
info@igp-powder.com  
igp-powder.com

A Dold Group company

240531



[igp-powder.com/ace](https://www.igp-powder.com/ace)

There is an answer  
to every surface.  
**IGP FOR SURE.**



**POWDER  
COATINGS**